

Tripod - 1TM

DATA SHEET

FEATURE SUMMARY

- Modular construction
- Multiple configurations
- Single tool assembly
- Field configurable
- 6061 aluminum
- Adjustable legs

DESCRIPTION

Tripod-1TM is a field-serviceable, field-configurable, modular, aluminum tripod.

The same segments are used for the mast and legs, allowing the installer to reconfigure the tripod in the field to accommodate multiple conditions and repair scenarios.

Tripod-1TM requires only a single wrench to adjust the guy cables.

Tripod-1TM is suitable for weather station equipment, light-weight antennas and lighting.

The mast may be erected from the bottom through the center hub. This facilitates installation and service by allowing the mast to be raised and lowered without removing stakes or requiring a ladder.

KEY FEATURES

Construction: 6061 machined and welded aluminum.

The mast is constructed of 1" (1.32"/33.5 mm) pipe, which is compatible with standard structural pipe fittings.

Stainless steel quick-release buttons lock each segment and a quick-release pin secures the mast in the elevated position (as pictured).

Standard wire rope clips are used for the stainless steel wire rope guy lines.

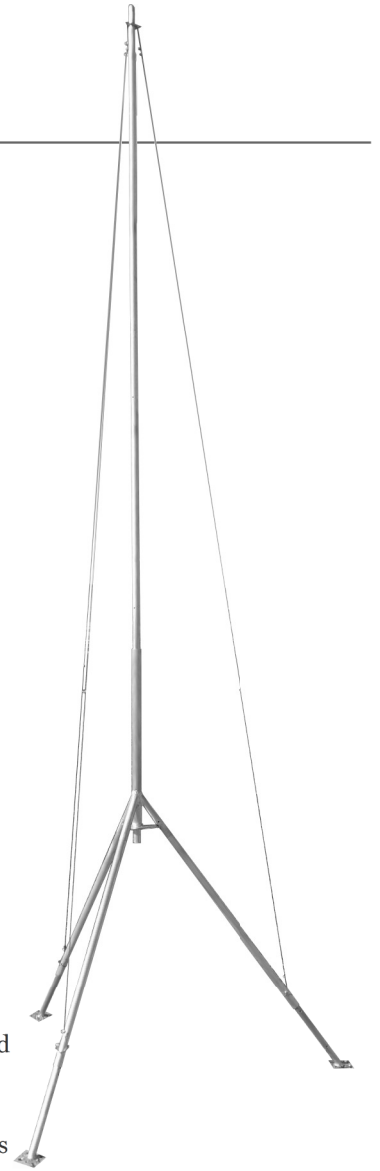
Assembly Tools: 7 mm (9/32") wrench to adjust the guy cables. Additional tools may be required for stakes or screws, depending on installation location.

Configuration: **Tripod-1TM** is available in 7 and 10 segment kits.

The mast may be suspended in the tripod hub (pictured above) or it can rest on the ground for additional stability and load bearing capability. A center anchor foot is available.

Guy cables can be attached to the legs for portability and minimal installation area, or staked separately.

Each adjustable leg has a large foot with holes for 1/2" rebar and 3/8" screws.



MECHANICAL – 7-SEGMENT

Material	3/4", 1", and 1 1/4" 6061 Aluminum pipe
Weight	9.3 kg (20.5 lb)
Mast/Leg Segments	33.5 mm diameter x 0.91 m (1.3 in diameter x 3 ft)
Max Height ¹	4.76 m (15.6 ft)
Storage/Ship Dimensions	280 x 280 x 1070 mm (11 x 11 x 42 in)
Leg Adjustment	Pin, 25.4 mm (1 in) centers
Max Slope ²	13° (23%)
Max Base Diameter	1.8 m (5.8 ft)
Leg Base	89 mm x 89 mm (3.5 in x 3.5 in)
Guy Cable	2 mm x 6.1 m (1/16 in x 20 ft)

MECHANICAL – 10-SEGMENT

Material	3/4", 1", and 1 1/4" 6061 Aluminum pipe
Weight	12.1 kg (26.7 lb)
Mast/Leg Segments	33.5 mm diameter x 0.91 m (1.3 in diameter x 3 ft)
Max Height ³	5.25 m (17.4 ft)
Storage/Ship Dimensions	280 x 280 x 1070 mm (11 x 11 x 42 in)
Leg Adjustment	Pin, 25.4 mm (1 in) centers
Max Slope ²	7.3° (13%)
Max Base Diameter	2.8 m (9.2 ft)
Leg Base	89 mm x 89 mm (3.5 in x 3.5 in)
Cable	2 mm x 7.6 m (1/16 in x 25 ft)

ACCESSORIES

Stakes	13 mm x 45 mm (1/2" rebar x 18")
Structural Fittings	Elbow, coupler, cross-over
Grounding Kit	Ground rod, wire, pipe clamp, rod clamp

- 1 – Single segment in each leg position and four mast segments. (See top image.)
- 2 – One leg down hill in maximum height position. Uphill legs in storage (lowest) position.
- 3 – Two segments in each leg position and four mast segments.

